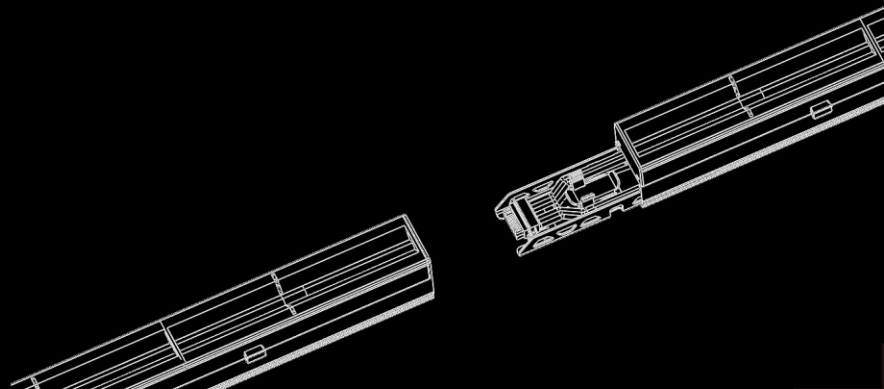


YDluxTM
Light for Life



Light for Life



**CB
CERTIFICATE**



**CE-LVD
CERTIFICATE**



**TUV MARKS
CERTIFICATE**



**GS
CERTIFICATE**



**EMC
CERTIFICATE**



**ROHS
CERTIFICATE**



**SAA
CERTIFICATE**



**ENEC
CERTIFICATE**

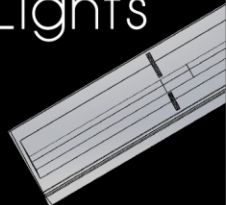


Systems



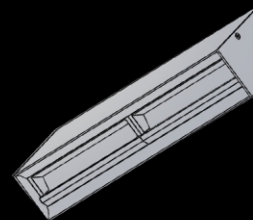
P01

Linear
Lights



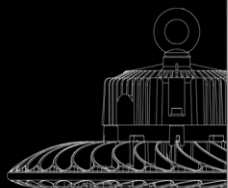
P10

Wall
Washers



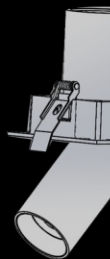
P27

UFO



P37

Spot
Lights



P47

INDEX

Linear Trunking Systems

SYSTEMS

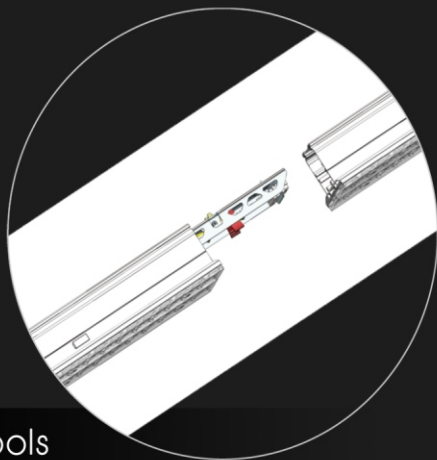


Trunking Systems

Trunking is an innovative design which integrated linear lighting, track lighting, spot lighting and more. With this system, end users are able to change their lighting environment tools-freely. It is widely applicable to supermarkets, warehouses, schools, car showrooms or other places where the objects are non-fixed. Because you are able to adjust the lighting scenes easily by yourself when with this system.

Innovative Design

Trunking system is meeting flexible demands for diversified applications. The modular kits are fully compatible. An individual fixture is adapted to complex lighting tasks. Pre-built with 11-pole current circuits, it is ready to meet tomorrow's needs. All functions, such as power supply, lighting controls or emergency lighting could be seamlessly integrated inside. Luminaire can be positioned flexibly and the systems can be adapted to structural alterations any time. It is a system as simple as just adding lighting modules--Tools Free.



Tools
Free Structure

Endless Combination

A pre-wired 3-phase & 2.5mm power supply. Allowing max. 16A or 200m trunking length in 3-phases power systems. Tool-free installation for diversified modulars.



Easy
& Simple

Multiple Installations

Applicable to suspension, surface mounted seamless installations.

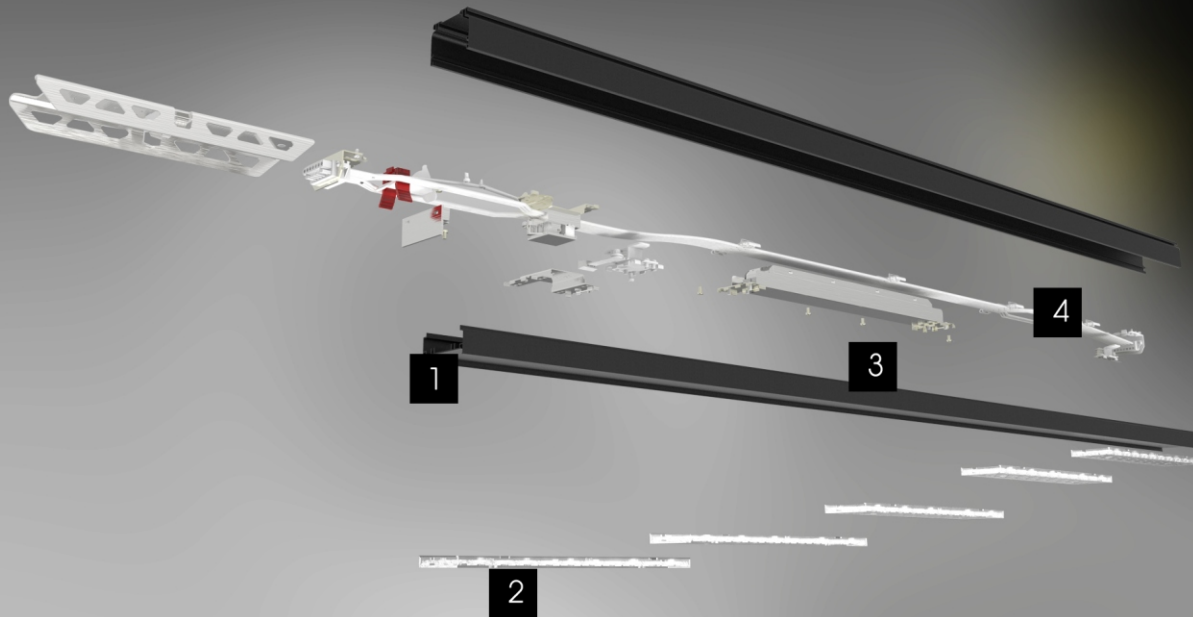


STRUCTURE
ANALYSIS

WE

provide products with innovative design and as easy installations as possible. Simiplism is our philosophy.

FEATURES



1

AL6063 Profile with optional colors white(default), silvery, or black.

2

Private molded lenses for multiple lighting performances.

3

Pre-built wires for powering. Tool-free installation to trunking rails.

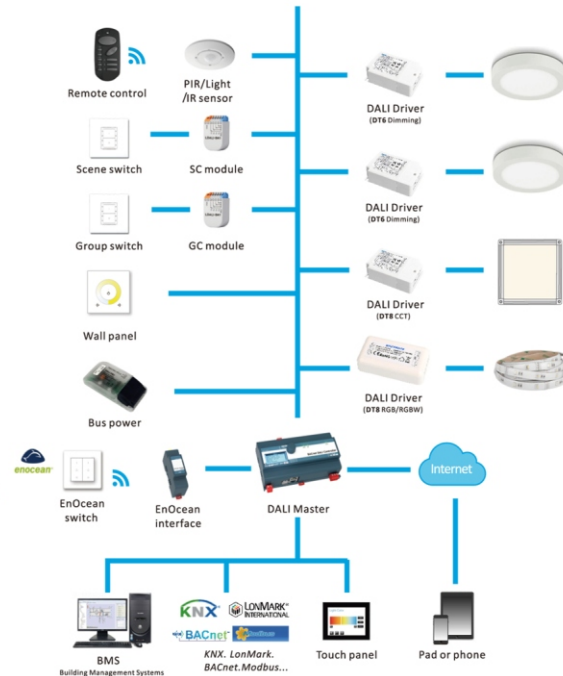
4

Integrated design. One step CLICK installation.

Features

- Support DT6 (LED modules), DT8 (colour control), etc.
- Support PIR motion sensor, IR remote control, LCD panel, wall panel and other control devices.
- Support EnOcean switch panel and sensor which can connect to the DALI bus.
- Support connect with KNX, Lonmark, BACnet, Modbus ... building bus.
- Support PC, Pad and Phone control to setup via web.
- Flick-free at any brightness, accuracy = 1%, efficiency $\geq 90\%$, THD <10, standby power <0.5W.
- Support single, group and broadcast control, scene settings, PIR motion sensor, constant illumination, etc.
- DALI member and comply with DALI official certified standard compatibility test.
- Compatible with Tridonic, ABB, Helvar, WOGO, etc.
- Certificates received ENEC, RCM, CCC, SAA, TUV-CE.

Overview



Dimming system is suitable for complex applications for controlling rooms and storey, for daylight-dependent control and dynamic light control. 3 types of dimming are available:

- DALI dimming
- 1–10V dimming
- DIM switch

DALI & DIMMING SYSTEMS



Emergency lighting systems ensures optimum lighting and orientation, even in the event of a power failure. General lighting and emergency lighting are combined in a single highly functional, integrative lighting solution.

A wide variety of emergency mode is available,

Central battery systems / Generator

EL1 EN1 & EL2 EN2 makes mode selected

Self contained battery

Under this mode, the luminaries could be 10W or 16W, working for 1 hours , 2 hours , and 3 hours

(depending on the demand selected in advance)

Ni-MH battery we used is high temperature resistant to make sure its life time could be

Longer than others.

EMERGENCY LIGHTING



Multi-sensor module
(PIR, Microwave,
Light and sound)



Track+Power socket



Track luminaire



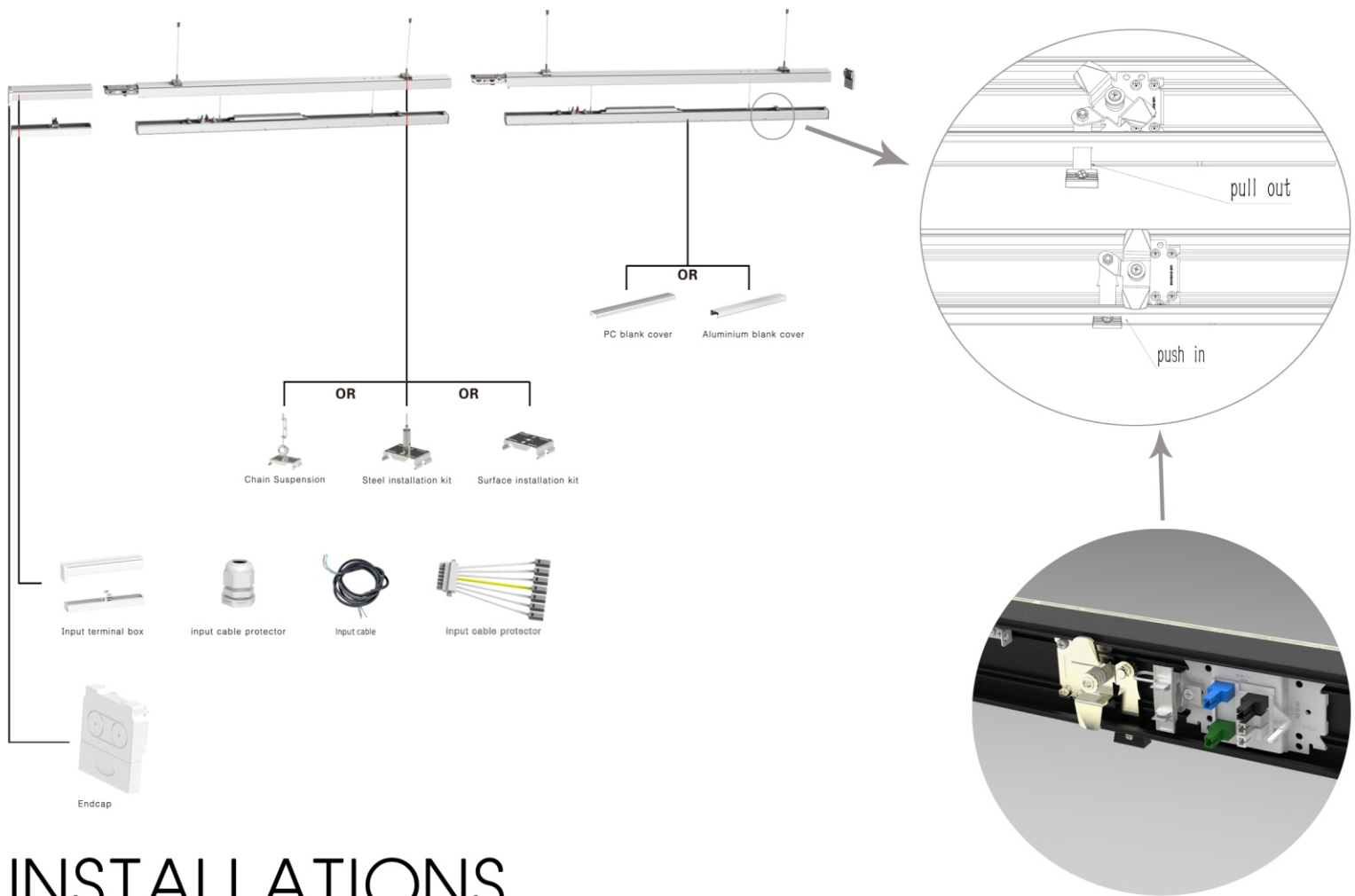
E27/E14 Base

Trunking has multi-functions, can be installed:

Multi-sensor Power socket

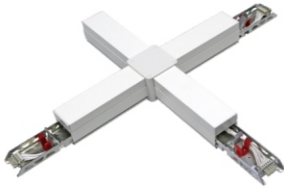
Track luminaire E27 and E14 base

MULTI-FUNCTIONS



INSTALLATIONS

All system components can be combined without tools.—, L, T and X connectors expand the system's application range.



X Node Connector



T Node Connector



L Node Connector



— Node Connector

Each node connector has diverse of electrical feed-in and feed-out. The node connector is not only to connect the cross trunking, but also to connect the wire inside the trunking. And the node connector itself could even be the electricity feed-in point.

■ NODE CONNECTOR

Linear Lights

series

10 LINEAR

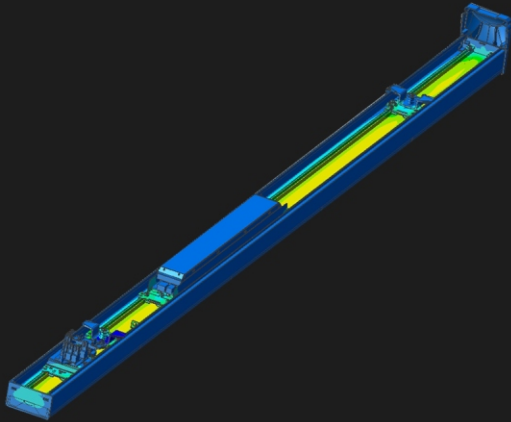


Linear Lights

In combination with the trunking systems, linear lights are able to be installed conveniently. Different lenses, 30° 60° 90°, Single Asymmetric, Double Asymmetric are available. Applicable to shopping mall shelf lighting, warehouse lighting, office lighting and more. The luminaires can be connected endlessly and seamlessly. New atmosphere can be created with this light.

Design Concepts

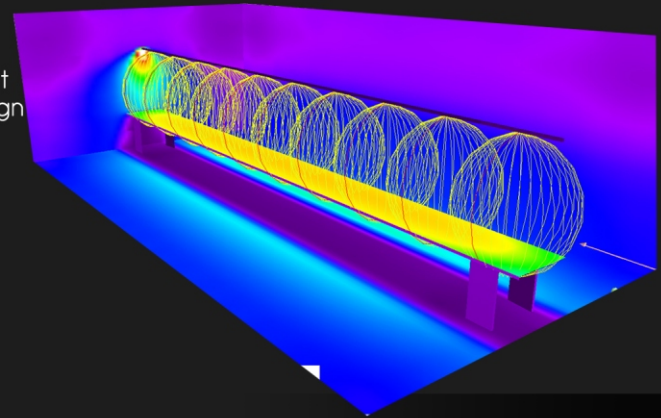
Reliability, Convenience and Performance have been considered during the overall design process. Every heat sinking points, each single ray trace, every convenience of your installation are to be cared.



Thermal
Analysis

Lux Analysis

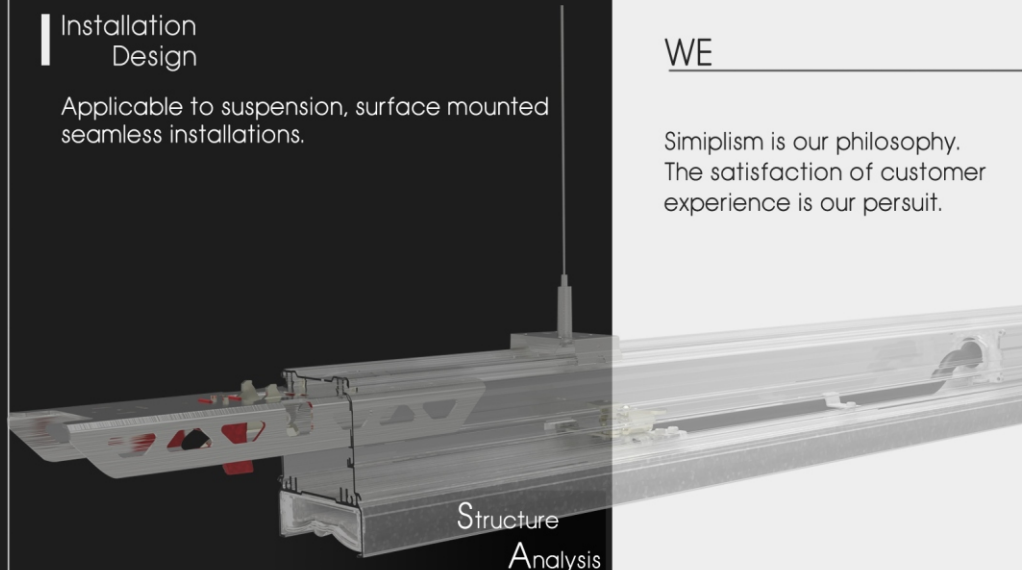
Sound technical support for all your project design needs.



Light Distribution
Design

Installation Design

Applicable to suspension, surface mounted seamless installations.

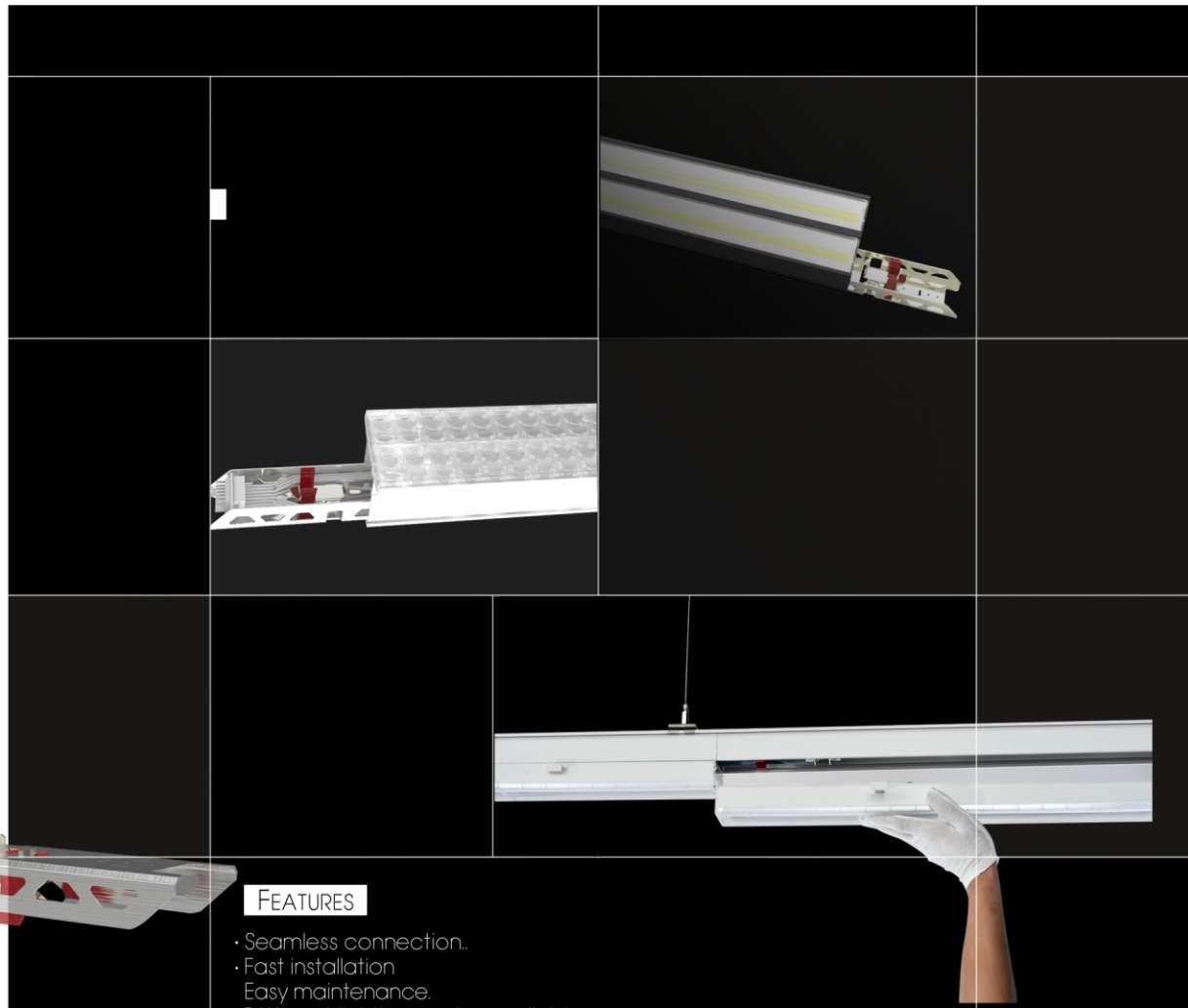
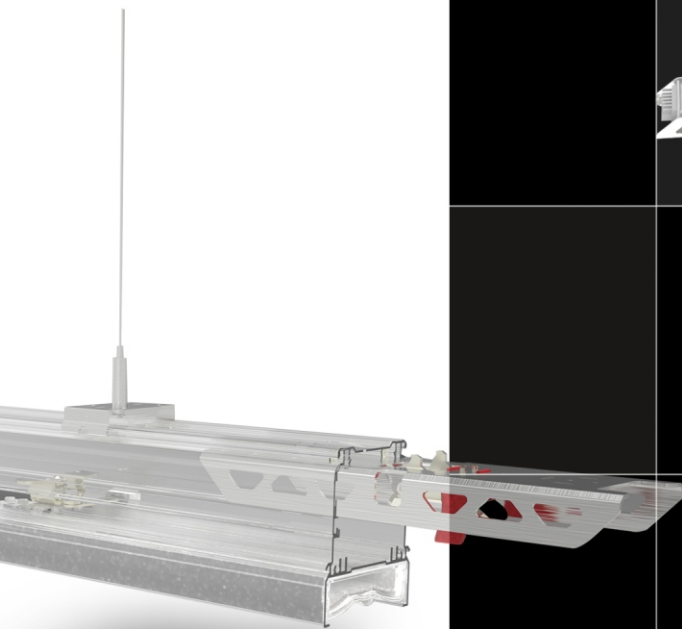


Structure
Analysis

WE

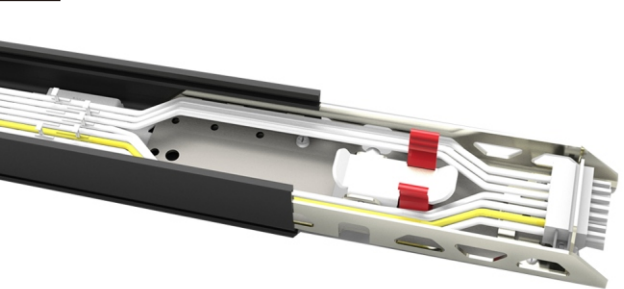
Simplism is our philosophy.
The satisfaction of customer
experience is our pursuit.

Linear



FEATURES

- Seamless connection.
- Fast installation
- Easy maintenance.
- Different lighting angles available.



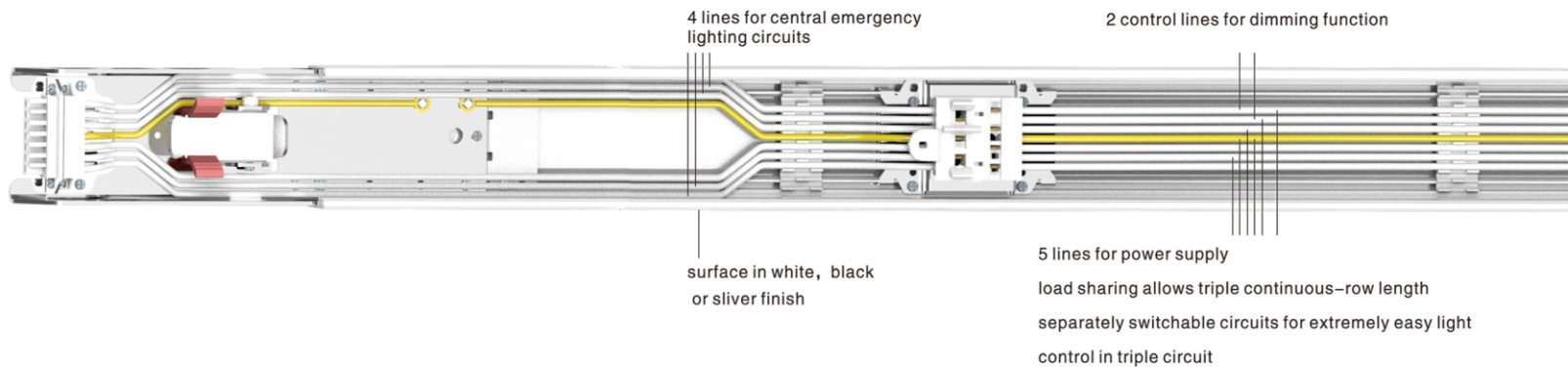
5-POLE



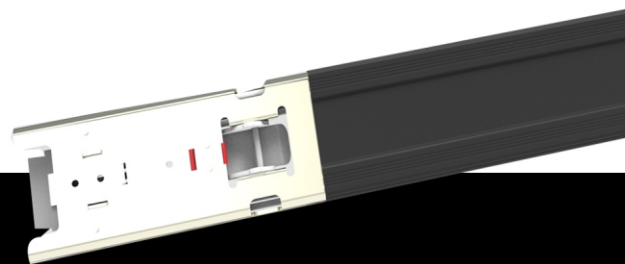
7-POLE



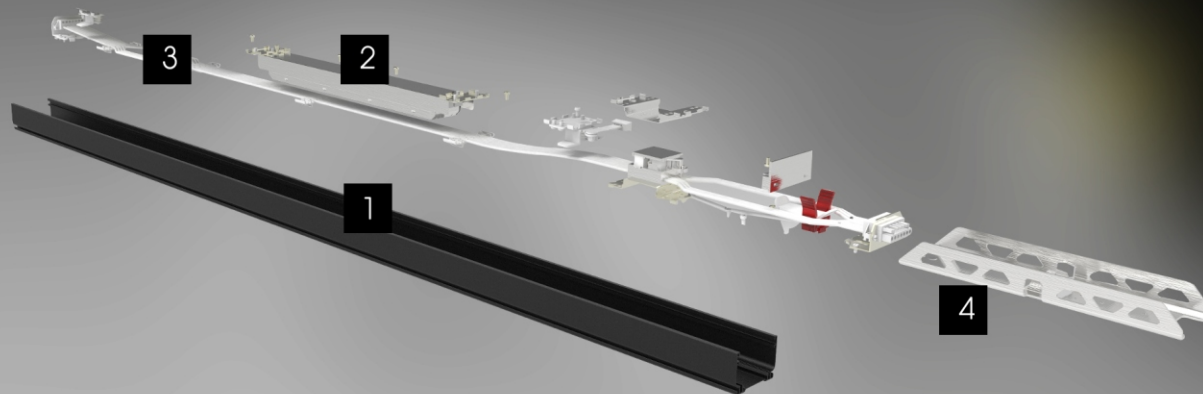
11-POLE



TRUNKING RAIL



FEATURES



1

AL6063 Profile with optional colors white(default), silvery, or black.

2

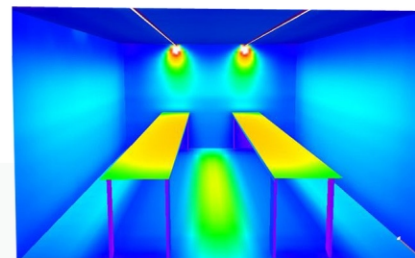
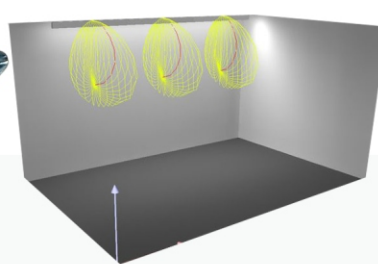
High quality constant current drivers.

3

Pre-built wires for power supply, dimming control or emergency lighting usage.

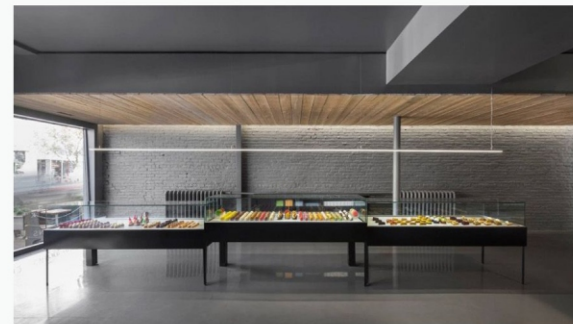
4

Zincplated Coldforged steel kit for reliable connection.



Item NO.	Length	Power
YND01X0624	577mm	24W
YND01X0628		28W
YND01X1540		40W
YND01X1550	1432mm	50W
YND01X1560		60W
YND01X1570		70W
YND01X3080		80W
YND01X30100	2861mm	100W
YND01X30140		140W
YND01X45120	4297mm	120W
YND01X45180		180W
YND01X45210		210W

Beam Angle	30°/60°/90°/Single/Double Asymmetric
Ra	82/95
CCT	2700/3000/4000/5000/6000K
Light Efficacy	130-160lm/W
Operating Temp.	-10°C-50°C
LED Chip	CREE/SAMSUNG/BRIDGELUX/LG
LED Driver	PHILIPS/Lifud/Tridonic/OSRAM
IP	20/40
Input	AC220-240V 50/60Hz
End Cap	With/out (Optional)



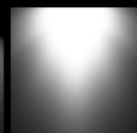
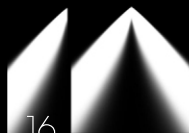
TYPHON

Asymmetric

30°

60°

90°



Top-brand
SMD chip



High colour rendering
index



Optional housing
colours



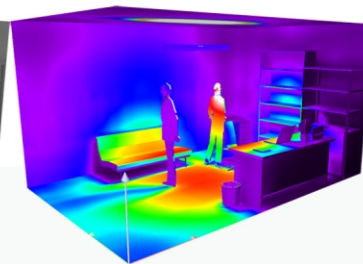
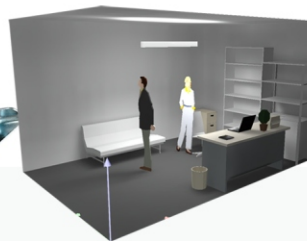
Excellent thermal
management



Ray Trace
Design



Dimmable versions
1-10V/DALI



Item NO.	Length	Power	Beam Angle	90°
YND01X1540	1500mm	40W	Ra	82/95
			CCT	2700/3000/4000/5000/6000K
YND01X1550	1500mm	50W	Light Efficacy	130-160lm/W
			Operating Temp.	-10°C-50°C
YND01X1560	1500mm	60W	LED Chip	CREE/SAMSUNG/BRIDGELUX/LG
			LED Driver	PHILIPS/Lifud/Tridonic/OSRAM
			IP	20/40
YND01X1570	1500mm	70W	Input	AC220-240V 50/60Hz
			End Cap	With/out (Optional)



METIS

90°



Top-brand
SMD chip



High colour rendering
index



Optional housing
colours



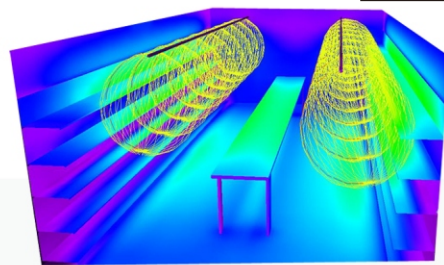
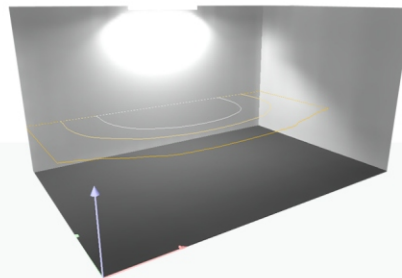
Excellent thermal
management



Ray Trace
Design



Dimmable versions
1-10V/DALI



Item NO.	Length	Power	Beam Angle	30°/60°/90°/Single/Double Asymmetric
YND01Z1540	1500mm	40W	Ra	82/95
			CCT	2700/3000/4000/5000/6000K
YND01Z1550	1500mm	50W	Light Efficacy	130-160lm/W
			Operating Temp.	-10°C-50°C
YND01Z1560	1500mm	60W	LED Chip	CREE/SAMSUNG/BRIDGELUX/LG
			LED Driver	PHILIPS/Lifud/Tridonic/OSRAM
YND01Z1570	1500mm	70W	IP	20/40
			Input	AC220-240V 50/60Hz
			End Cap	With/out (Optional)



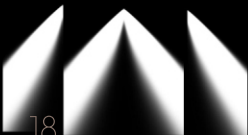
MERAK

Asymmetric

30°

60°

90°



Top-brand
SMD chip



High colour rendering
index



Optional housing
colours



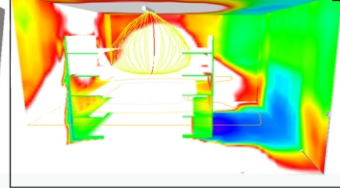
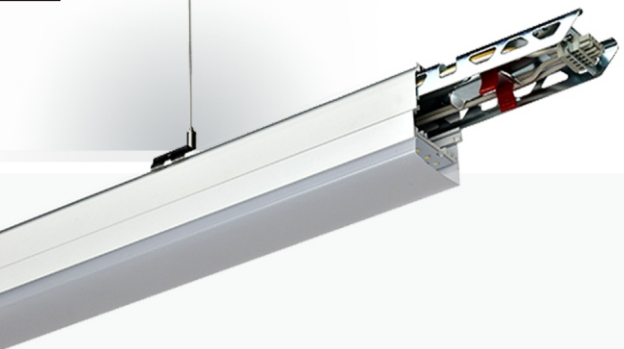
Excellent thermal
management



Ray Trace
Design



Dimmable versions
1-10V/DALI



Item NO.	Length	Power	Beam Angle	120°
YND01C1540	1500mm	40W	Ra	82/95
			CCT	2700/3000/4000/5000/6000K
			Light Efficacy	130-160lm/W
YND01C1550	1500mm	50W	Operating Temp.	-10°C-50°C
			LED Chip	CREE/SAMSUNG/BRIDGELUX/LG
YND01C1560	1500mm	60W	LED Driver	PHILIPS/Lifud/Tridonic/OSRAM
			IP	20/40
YND01C1570	1500mm	70W	Input	AC220-240V 50/60Hz
			End Cap	With/out (Optional)



PHECDA

120°



Top-brand
SMD chip



High colour rendering
index



Optional housing
colours



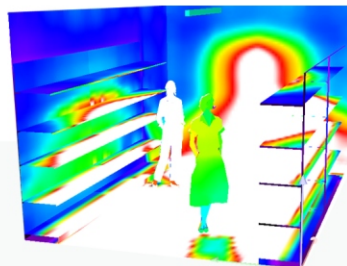
Excellent thermal
management



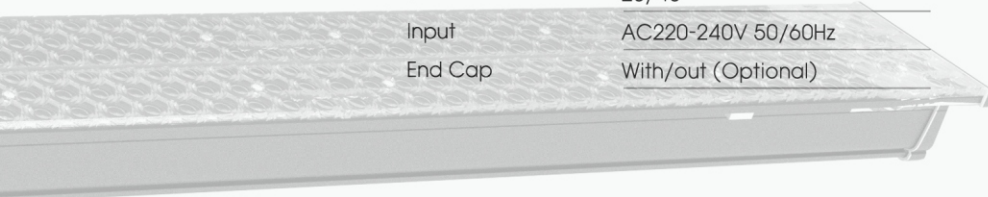
Ray Trace
Design



Dimmable versions
1-10V/DALI



Item NO.	Length	Power	Beam Angle	30°60°90°/Single/Double Asymmetric
YND01Z1580	1432mm	40W*2	Ra	82/95
YND01Z15100		50W*2	CCT	2700/3000/4000/5000/6000K
YND01Z15120		60W*2	Light Efficacy	130-160lm/W
YND01Z15140		70W*2	Operating Temp.	-10℃-50℃
			LED Chip	CREE/SAMSUNG/BRIDGELUX/LG
			LED Driver	PHILIPS/Lifud/Tridonic/OSRAM
			IP	20/40
			Input	AC220-240V 50/60Hz
			End Cap	With/out (Optional)



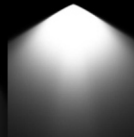
MEGREZ

Asymmetric

30°

60°

90°



Top-brand
SMD chip



High colour rendering
index



Optional housing
colours



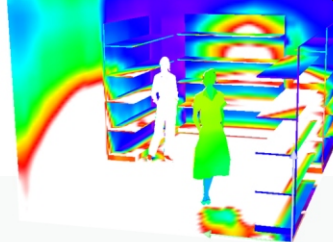
Excellent thermal
management



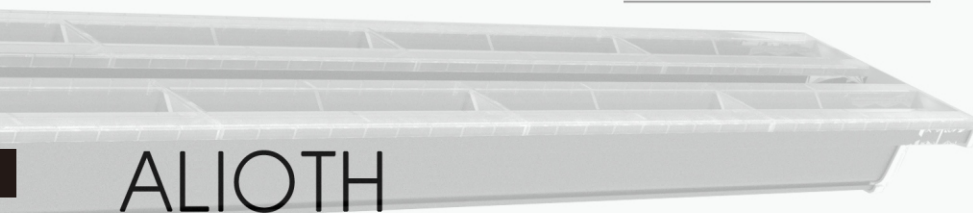
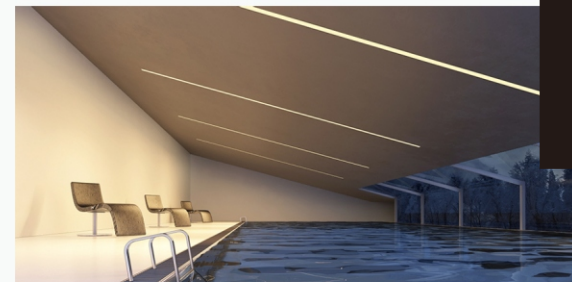
Ray Trace
Design



Dimmable versions
1-10V/DALI



Item NO.	Length	Power	Beam Angle	30°60°90°/Single/Double Asymmetric
YND01X1580	1432mm	40W*2	Ra	82/95
YND01X15100		50W*2	CCT	2700/3000/4000/5000/6000K
YND01X15120		60W*2	Light Efficacy	130-160lm/W
YND01X15140		70W*2	Operating Temp.	-10℃-50℃
			LED Chip	CREE/SAMSUNG/BRIDGELUX/LG
			LED Driver	PHILIPS/Lifud/Tridonic/OSRAM
			IP	20/40
			Input	AC220-240V 50/60Hz
			End Cap	With/out (Optional)



ALIOTH

Asymmetric

30°

60°

90°



Top-brand
SMD chip



High colour rendering
index



Optional housing
colours



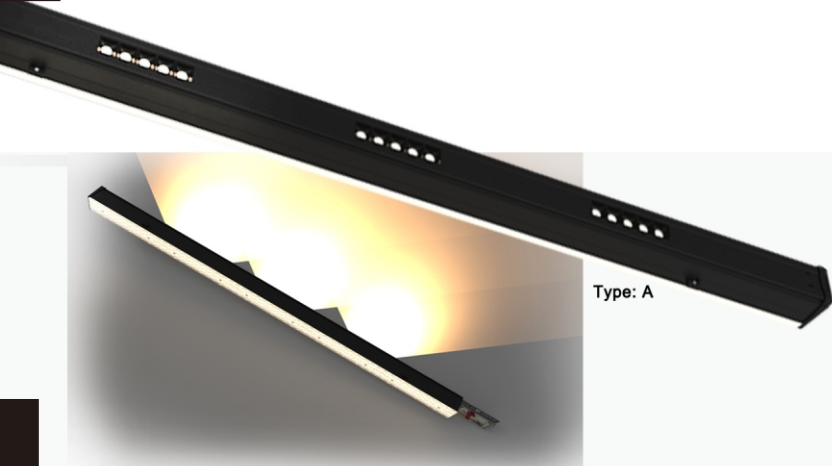
Excellent thermal
management



Ray Trace
Design

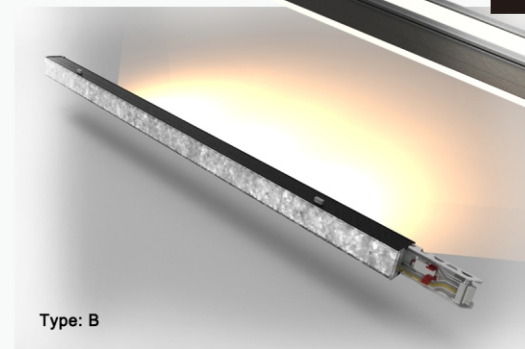
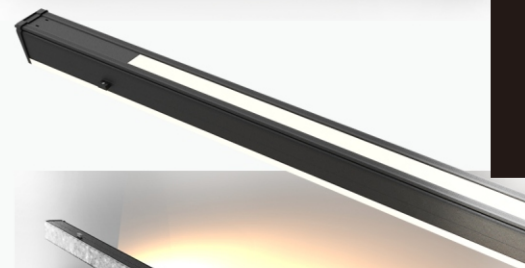
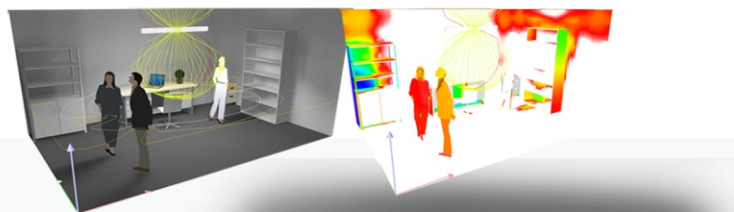


Dimmable versions
1-10V/DALI



Type: A

Item NO.	Length	Power	Beam Angle	30°60°90°/Single/Double Asymmetric
YND01Z1555-3	1432mm	40+15W	Ra	82/95
YND01Z1565-3		50+15W	CCT	2700/3000/4000/5000/6000K
YND01Z1575-3		60+15W	Light Efficacy	130-160lm/W
YND01Z1585-3		70+15W	Operating Temp.	-10℃-50℃
			LED Chip	CREE/SAMSUNG/BRIDGELUX/LG
			LED Driver	PHILIPS/Lifud/Tridonic/OSRAM
			IP	20
			Input	AC220-240V 50/60Hz
			End Cap	With/out (Optional)



Type: B

MIZAR

Asymmetric

30°

60°

90°



Top-brand
SMD chip



High colour rendering
index



Optional housing
colours



Excellent thermal
management



Ray Trace
Design



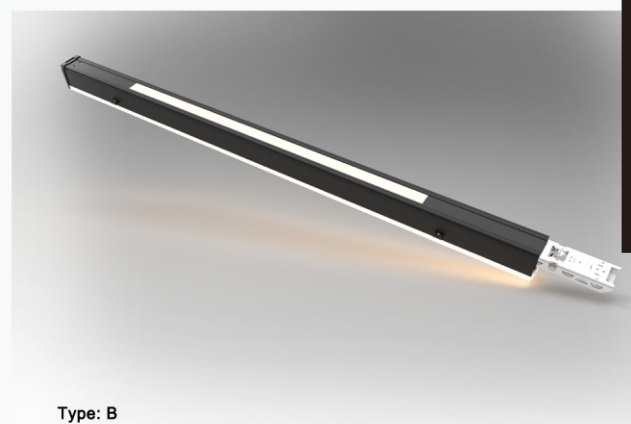
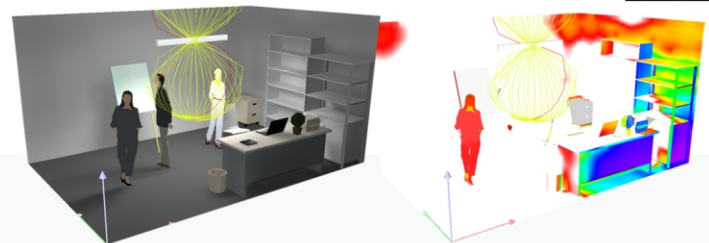
Dimmable versions
1-10V/DALI



Type: A

Item NO.	Length	Power
YND01X1555-3	1432mm	40+15W
YND01X1565-3		50+15W
YND01X1575-3		60+15W
YND01X1585-3		70+15W

Beam Angle	30°/60°/90°/Single/Double Asymmetric
Ra	82/95
CCT	2700/3000/4000/5000/6000K
Light Efficacy	130-160lm/W
Operating Temp.	-10°C-50°C
LED Chip	CREE/SAMSUNG/BRIDGELUX/LG
LED Driver	PHILIPS/Lifud/Tridonic/OSRAM
IP	20
Input	AC220-240V 50/60Hz
End Cap	With/out (Optional)



Type: B

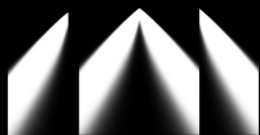
ALKAID

Asymmetric

30°

60°

90°



Top-brand
SMD chip



High colour rendering
index



Optional housing
colours



Excellent thermal
management

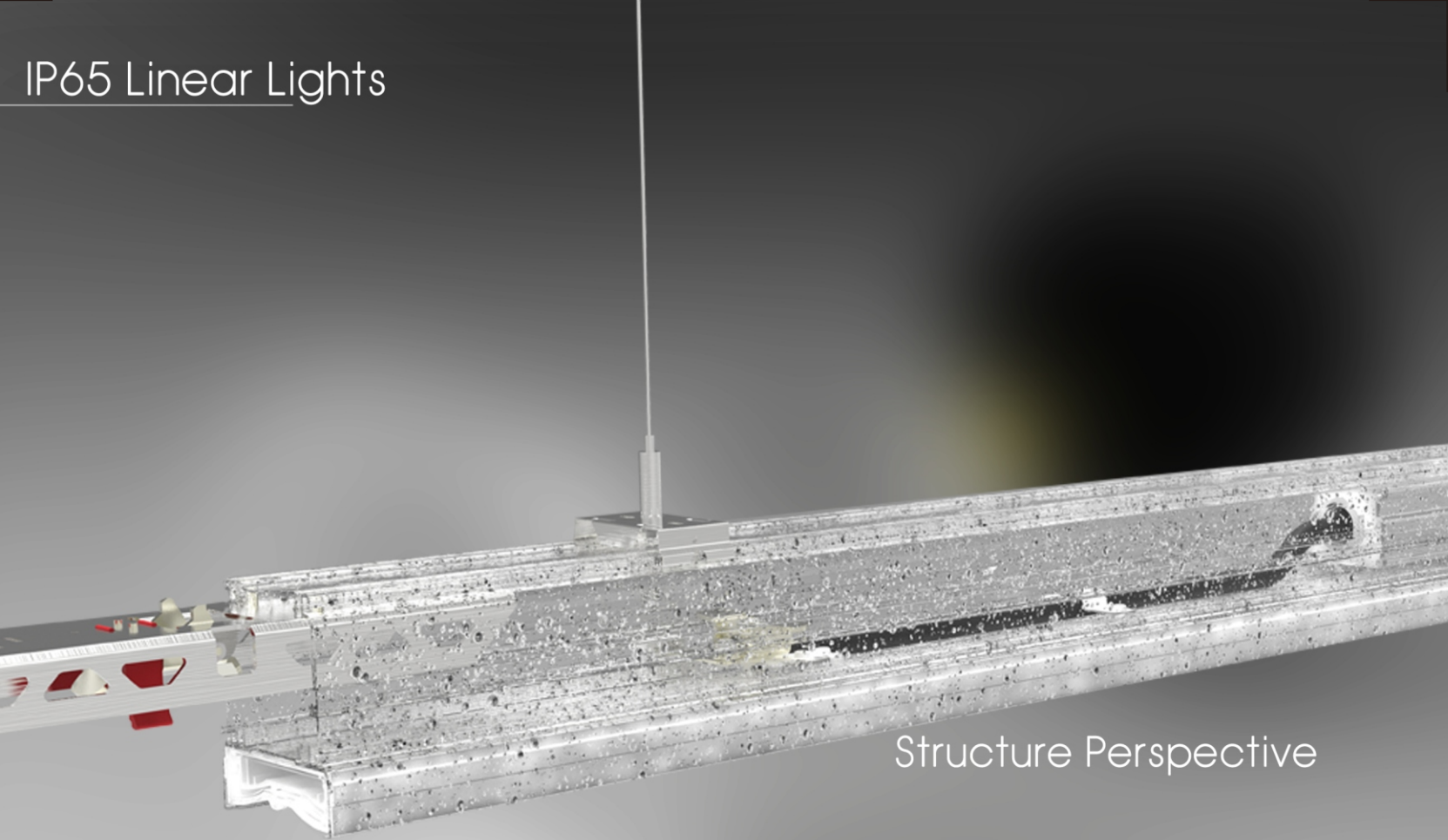


Ray Trace
Design



Dimmable versions
1-10V/DALI

IP65 Linear Lights



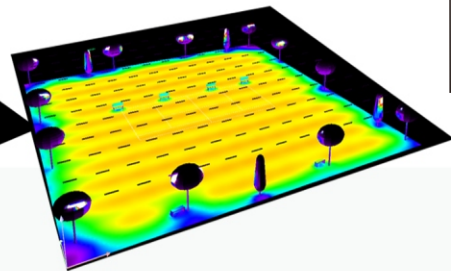
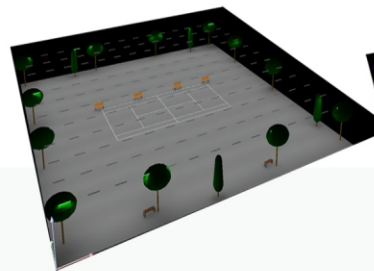
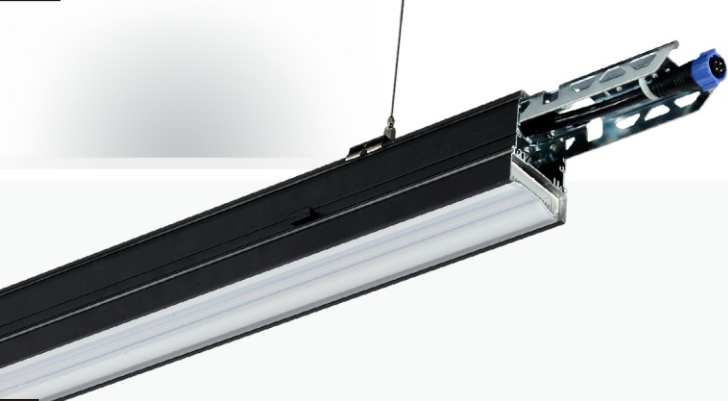
Structure Perspective



IP65 Linear Lights

Thanks to innovative water resistant design, this linear light is widely applicable to wet locations, outdoors. Waters, Insects, moth and dusts would be no longer a headache to your designs.

WET
LOCATIONS



WET LOCATIONS



Item NO.	Length	Power	Beam Angle	90°
YND01X1540	1500mm	40W	Ra	82/95
			CCT	2700/3000/4000/5000/6000K
YND01X1550	1500mm	50W	Light Efficacy	130-160lm/W
			Operating Temp.	-10°C-50°C
YND01X1560	1500mm	60W	LED Chip	CREE/SAMSUNG/BRIDGELUX/LG
			LED Driver	PHILIPS/Lifud/Tridonic/OSRAM
			IP	65
YND01X1570	1500mm	70W	Input	AC220-240V 50/60Hz
			End Cap	With/out (Optional)

DUBHE

90°



Top-brand
SMD chip



High colour rendering
index



Optional housing
colours



Excellent thermal
management



Ray Trace
Design



Dimmable versions
1-10V/DALI

Wall Washer_{Series}

SCENES

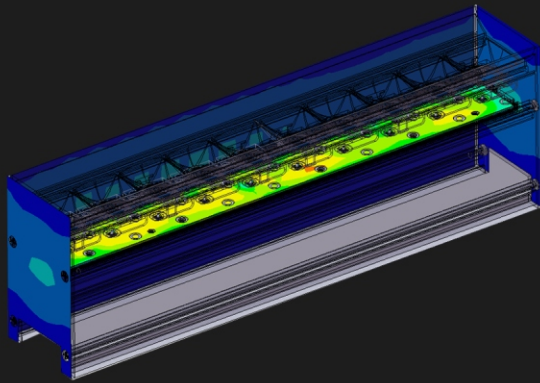


Wall Washer Lights

Thanks to latest LED SDCM technology, the wall washers are able to create scenes with highly uniformity. No matter Trunking installation, Track installation, Surface Mounting or Suspension installation, there is always a mature solution for you.

Design Concepts

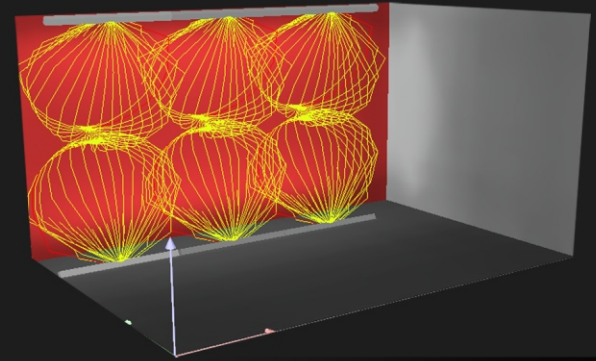
Reliability, Convenience and Performance have been considered during the overall design process. Every heat sinking points, each single ray trace, every convenience of your installation are to be cared.



Thermal Analysis

Lux Analysis

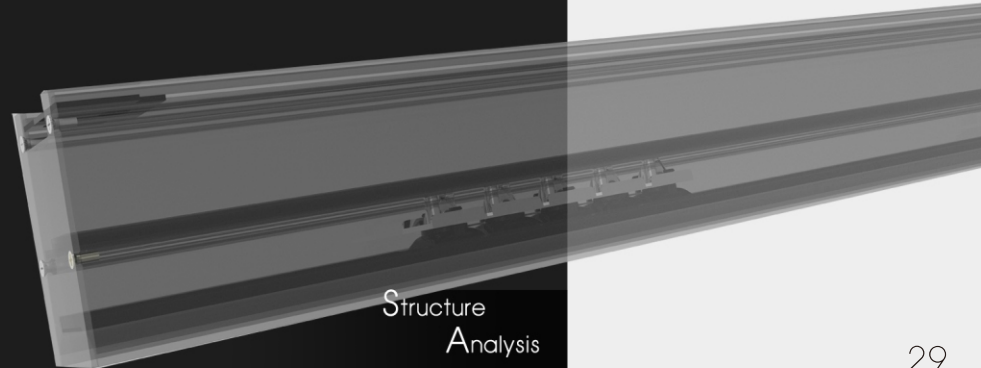
Sound technical support for all your project design needs.



Light Distribution Design

Installation Design

Applicable to Trunking, Track, Suspension, Surface mounting, seamless installations.

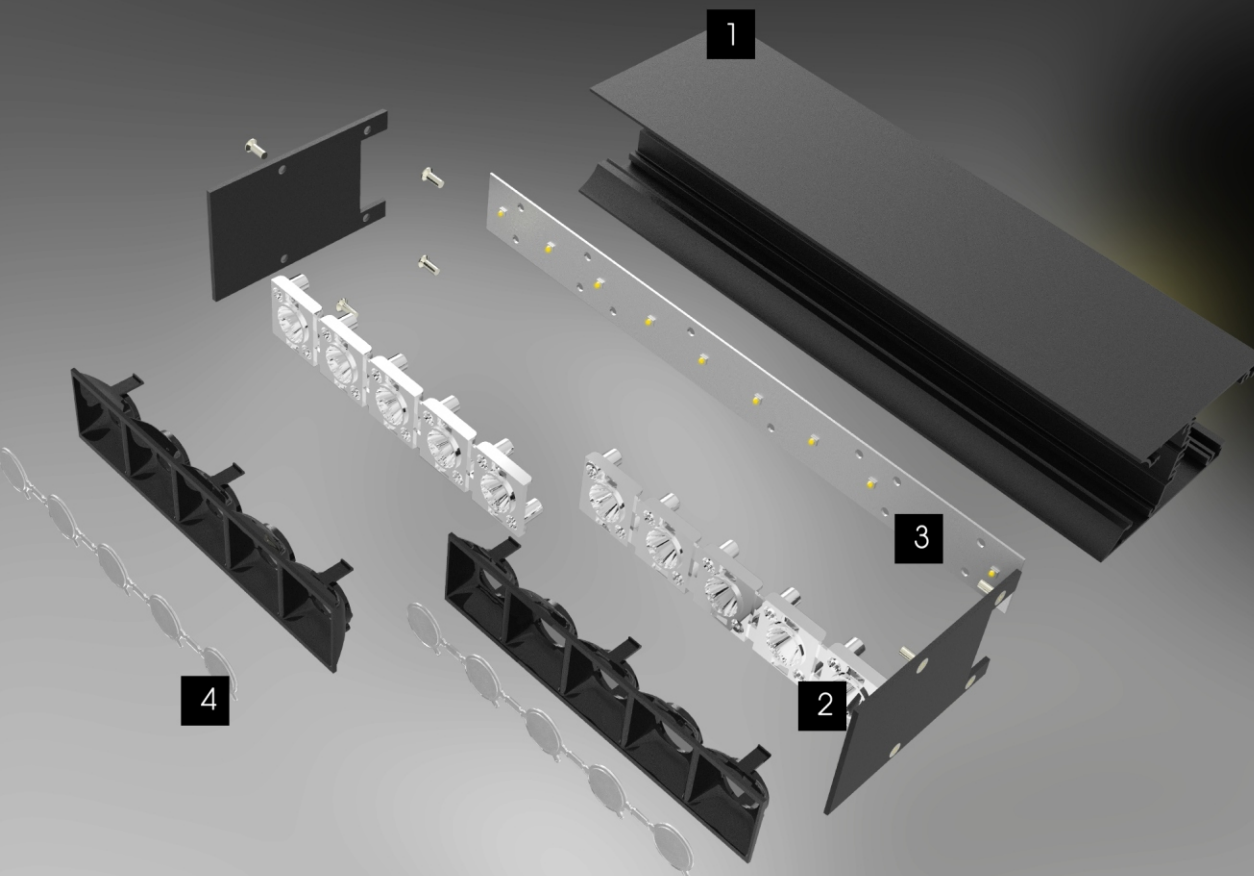


Structure Analysis

WE

Simplism is our philosophy.
The satisfaction of customer experience is our persuit.

FEATURES



1

AL6063 Profile for efficient heat sinking.

2

Private molded reflector for multiple lighting performances.

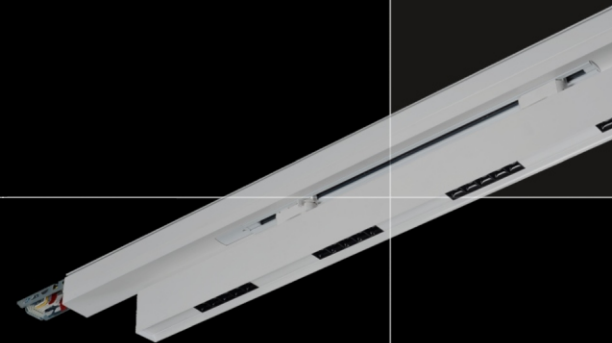
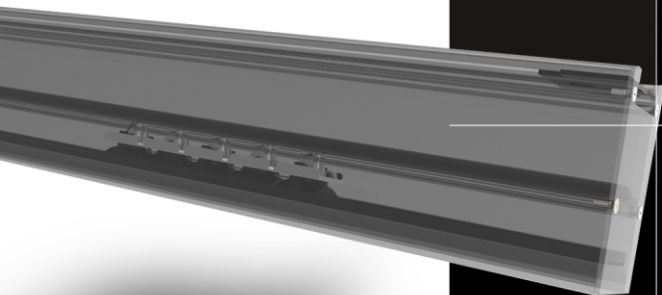
3

Top-brand LED chip to ensure the max. lighting uniformity.

4

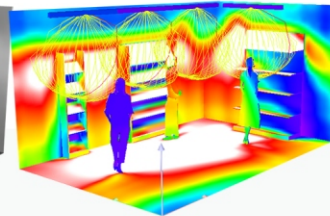
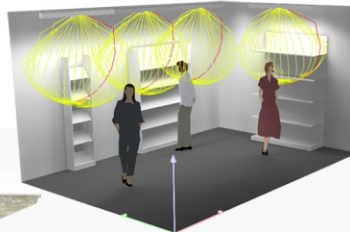
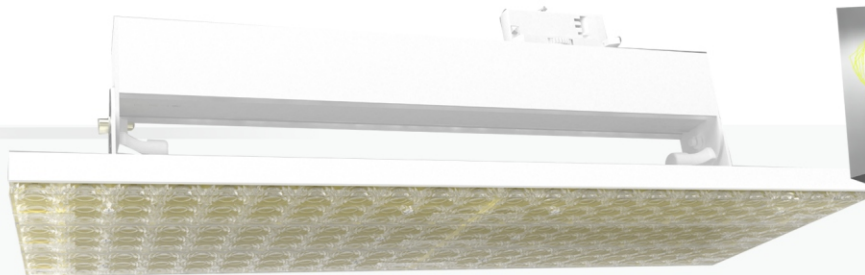
Different lenses available-- foggy, textured, strip shape.

Wall Washers



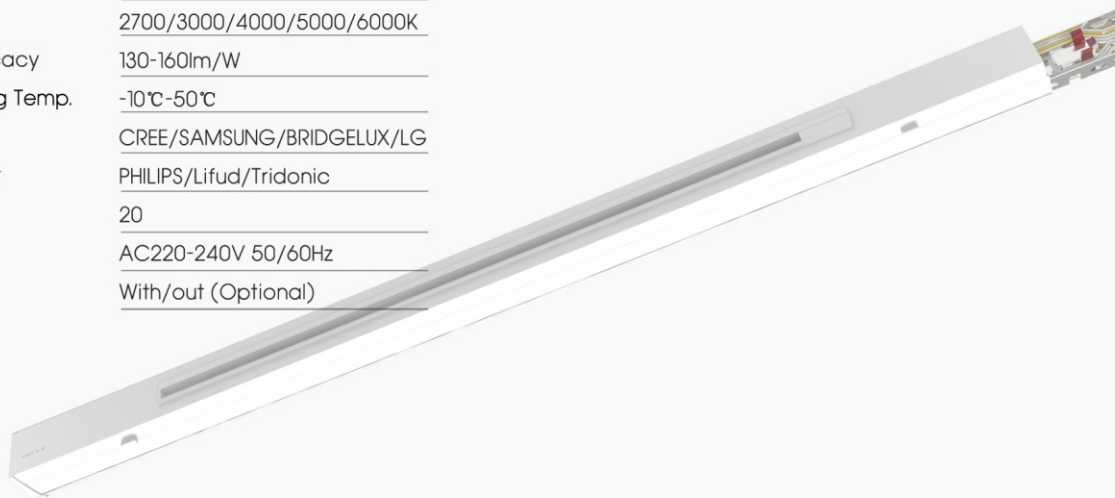
FEATURES

- Seamless connection.
- Fast installation
- Easy maintenance.
- Different lighting angles available.



Item NO.	Length	Power
YND01Z3070	600mm	70W

Beam Angle	30°/60°/90°/Single/Double Asymmetric
Ra	82/95
CCT	2700/3000/4000/5000/6000K
Light Efficacy	130-160lm/W
Operating Temp.	-10℃-50℃
LED Chip	CREE/SAMSUNG/BRIDGELUX/LG
LED Driver	PHILIPS/Lifud/Tridonic
IP	20
Input	AC220-240V 50/60Hz
End Cap	With/out (Optional)



VENUS

Asymmetric

30°

60°

90°



Top-brand
SMD chip



High colour rendering
index



Optional housing
colours



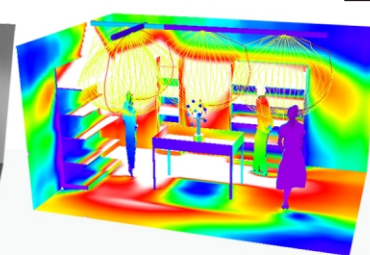
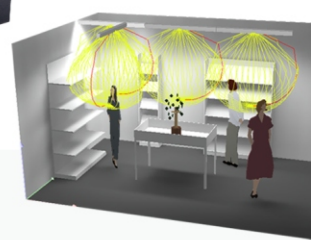
Excellent thermal
management



Ray Trace
Design

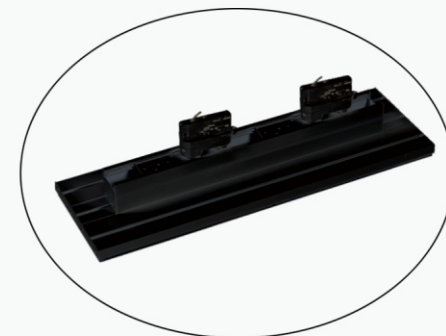


Dimmable versions
1-10V/DALI



Item NO.	Length	Power
YND01X3070	600mm	70W

Beam Angle	30°/60°/90°/Single/Double Asymmetric
Ra	82/95
CCT	2700/3000/4000/5000/6000K
Light Efficacy	130-160lm/W
Operating Temp.	-10°C-50°C
LED Chip	CREE/SAMSUNG/BRIDGELUX/LG
LED Driver	PHILIPS/Lifud/Tridonic
IP	20
Input	AC220-240V 50/60Hz
End Cap	With/out (Optional)



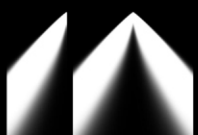
JUPITER

Asymmetric

30°

60°

90°



Top-brand
SMD chip



High colour rendering
index



Optional housing
colours



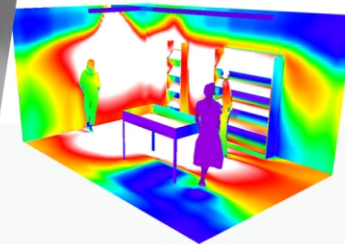
Excellent thermal
management



Ray Trace
Design



Dimmable versions
1-10V/DALI

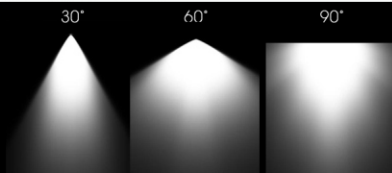


Item NO.	Length	Power
YND01X0320	270mm	20W
YND01X1230	1200mm	30W
YND01X1240	1200mm	40W

Beam Angle	30°60°90°
Ra	82/95
CCT	2700/3000/4000/5000/6000K
Light Efficacy	80-90lm/W
Operating Temp.	-10℃-50℃
LED Chip	CREE/SAMSUNG/BRIDGELUX/LG
LED Driver	PHILIPS/Lifud/Tridonic/OSRAM
IP	20
Input	AC220-240V 50/60Hz
End Cap	With/out (Optional)



MERCURY



Top-brand
SMD chip



High colour rendering
index



Optional housing
colours



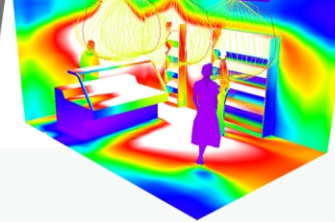
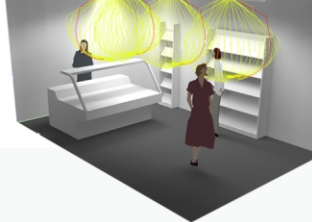
Excellent thermal
management



Ray Trace
Design



Dimmable versions
1-10V/DALI



Item NO.	Length	Power
YND01X0320	270mm	20W
YND01X1230	1200mm	30W
YND01X1240	1200mm	40W

Beam Angle	120°
Ra	82/95
CCT	2700/3000/4000/5000/6000K
Light Efficacy	80-90lm/W
Operating Temp.	-10°C-50°C
LED Chip	CREE/SAMSUNG/BRIDGELUX/LG
LED Driver	PHILIPS/Lifud/Tridonic/OSRAM
IP	20
Input	AC220-240V 50/60Hz
End Cap	With/out (Optional)



MARS

Asymmetric



120°



Top-brand
SMD chip



High colour rendering
index



Optional housing
colours



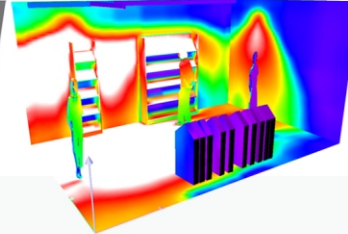
Excellent thermal
management



Ray Trace
Design



Dimmable versions
1-10V/DALI



Item NO.	Length	Power
YND080612	600mm	12W
YND081020	1000mm	20W
YND081225	1200mm	25W

Beam Angle	120°
Ra	82/95
CCT	2700/3000/4000/5000/6000K
Light Efficacy	80-90lm/W
Operating Temp.	-10°C-50°C
LED Chip	CREE/SAMSUNG/BRIDGELUX/LG
LED Driver	PHILIPS/Lifud/Tridonic/OSRAM
IP	20
Input	AC220-240V 50/60Hz
End Cap	With/out (Optional)



SATURN

120°



Top-brand
SMD chip



High colour rendering
index



Optional housing
colours



Excellent thermal
management



Ray Trace
Design



Dimmable versions
1-10V/DALI

High Bay Lights

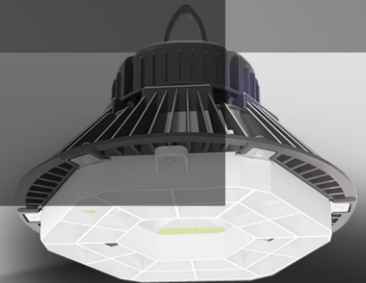
Series

UFO



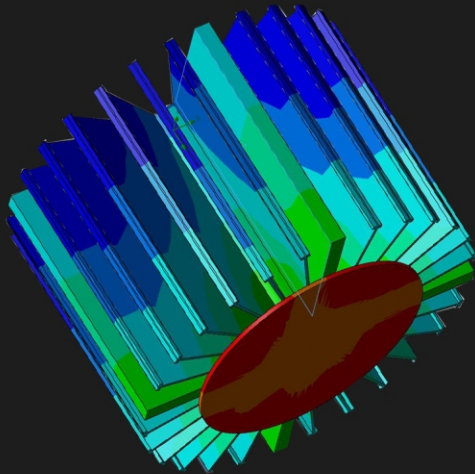
UFO High Bay Lights

Thanks to advanced thermal control technology, the heat is well managed to ensure best lumen maintenance rate. Unique ray trace design technology helps to meet clients' diversified needs at lowest UGR.



Design Concepts

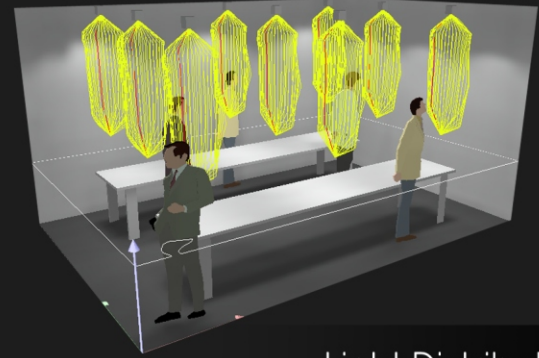
Reliability, Convenience and Performance have been considered during the overall design process. Every heat sinking points, each single ray trace, every convenience of your installation are to be cared.



Thermal
Analysis

Lux Analysis

Sound technical support for all your project design needs.



Light Distribution
Design

Installation Design

Fast installation design.

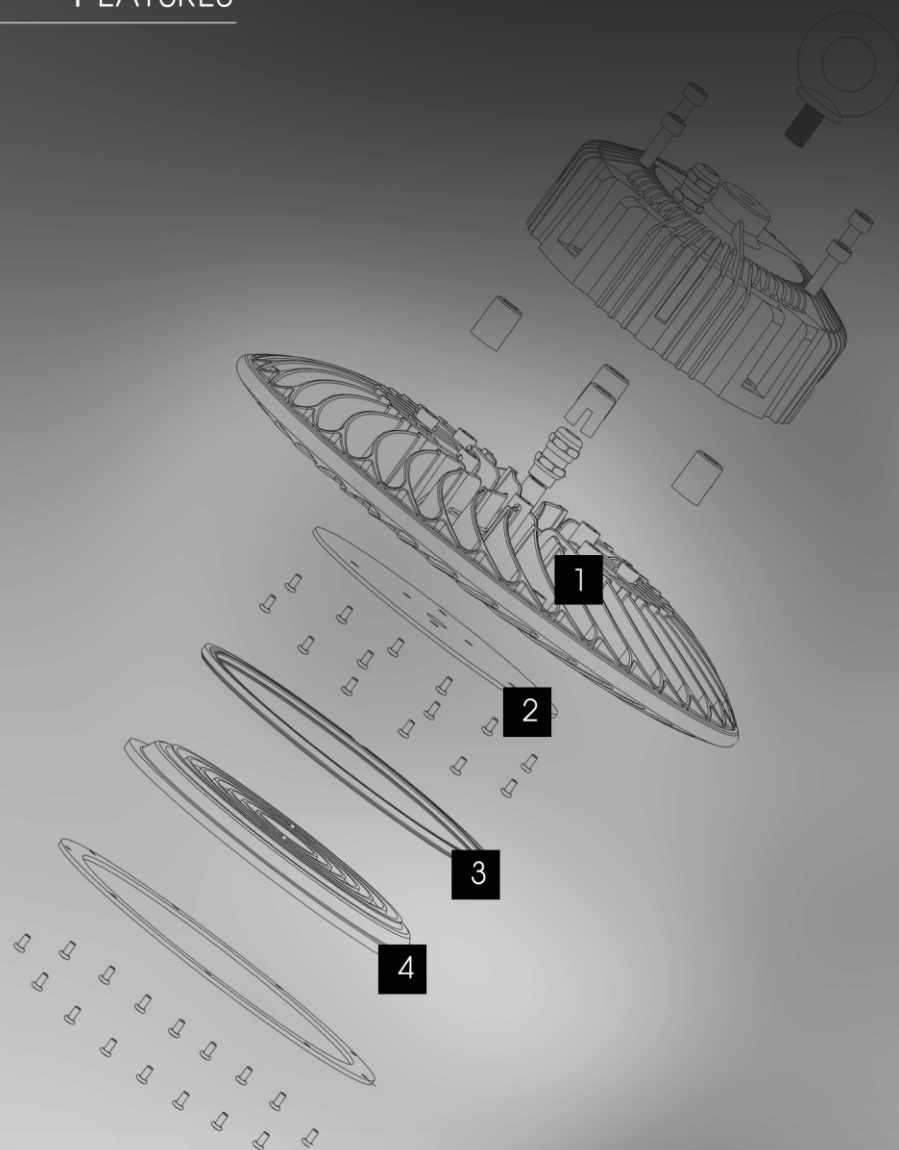


Structure
Analysis

WE

Simplism is our philosophy.
The satisfaction of customer
experience is our persuit.

FEATURES



1
ADC12 Die-casting aluminum
body with advanced
air-convection design.

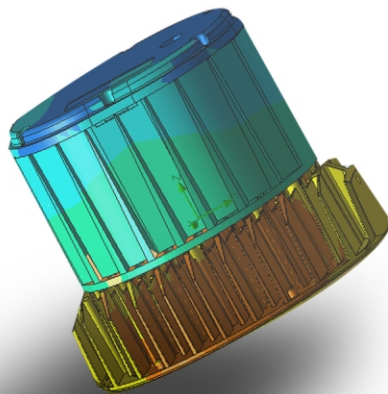
2
Superconducting aluminum
PCB for better lumen
maintenance rate.

3
Vivid color sealing rings.

4
Diversified beam angles for
multi-lighting needs.

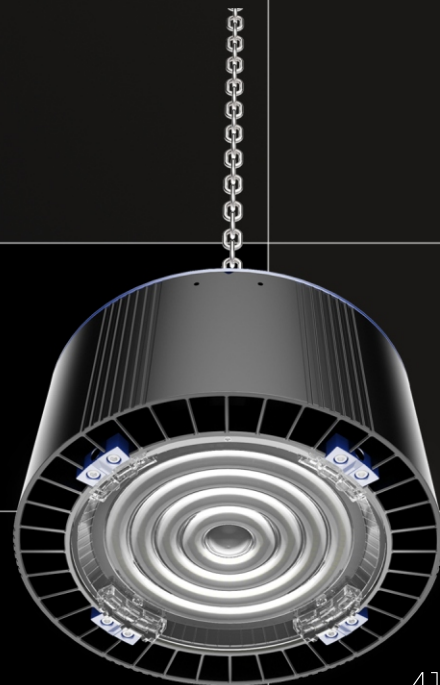
UFO

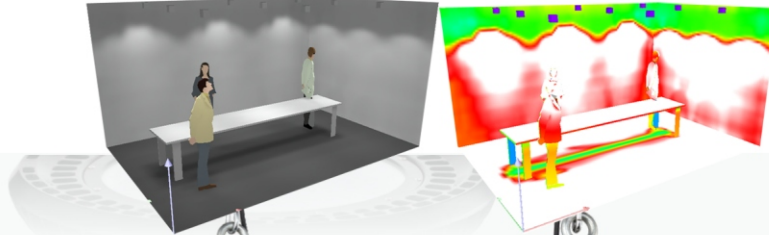
High Bays



FEATURES

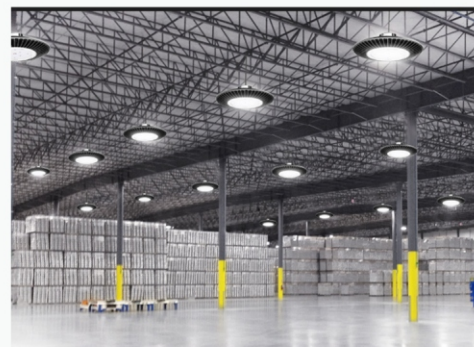
- Top-brand LED drivers.
- Top-brand LED Chips.
- Maintenance-free design.
- Different lighting angles available.



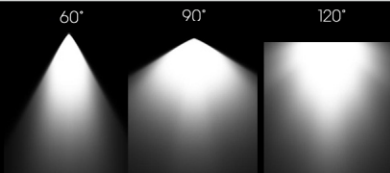


Item No.:	Size(mm):	Power:
YNDHBL1100	Φ280	100W
YNDHBL1150	Φ340	150W
YNDHBL1200	Φ400	200W

Beam Angle	60°90°120°
Ra	82/95
CCT	2700/3000/4000/5000/6000K
Light Efficacy	120-130lm/W
Operating Temp.	-10℃-50℃
LED Chip	CREE/SAMSUNG/BRIDGELUX/LG
LED Driver	PHILIPS/Lifud/Tridonic
IP	65
Input	AC85-265V 50/60Hz
End Cap	-



HESTIA



Top-brand
SMD chip



High colour rendering
index



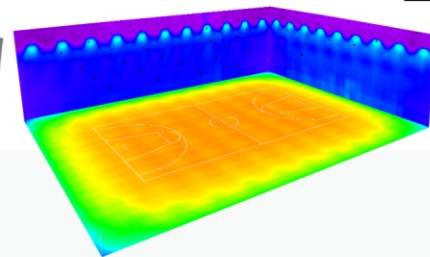
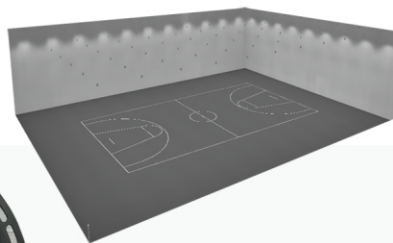
Optional housing
colours



Excellent thermal
management

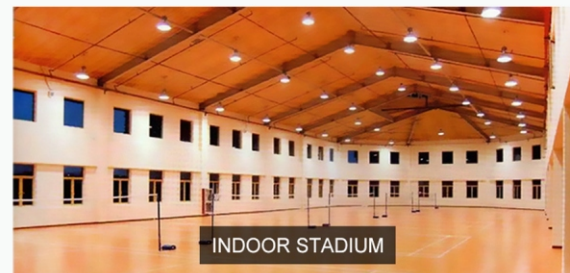


Ray Trace
Design



Item No.:	Size(mm):	Power:
YNDHBL6100	Φ320	100W
YNDHBL6150	Φ360	150W
YNDHBL6200	Φ400	200W

Beam Angle	90°120°
Ra	82/95
CCT	2700/3000/4000/5000/6000K
Light Efficacy	120-130lm/W
Operating Temp.	-10℃-50℃
LED Chip	CREE/SAMSUNG/BRIDGELUX/LG
LED Driver	PHILIPS
IP	65
Input	AC85-265V 50/60Hz
End Cap	-



POSEIDON



Top-brand
SMD chip



High colour rendering
index



Optional housing
colours



Excellent thermal
management

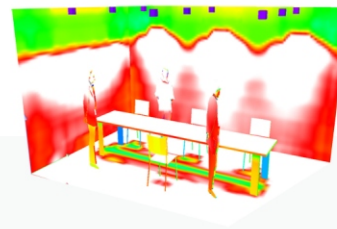


Ray Trace
Design

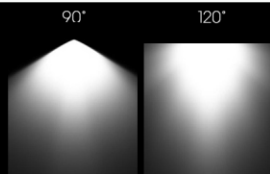


Item No.:	Size(mm):	Power:
YNDHBL360	Φ220	60W
YNDHBL3100	Φ280	100W
YNDHBL3150	Φ320	150W
YNDHBL3200	Φ355	200W

Beam Angle	90°/120°
Ra	82/95
CCT	2700/3000/4000/5000/6000K
Light Efficacy	120-130lm/W
Operating Temp.	-10°C-50°C
LED Chip	CREE/SAMSUNG/BRIDGELUX/LG
LED Driver	PHILIPS/Lifud/Tridonic
IP	65
Input	AC85-265V 50/60Hz
End Cap	-



ECLIPSE



Top-brand
SMD chip



High colour rendering
index



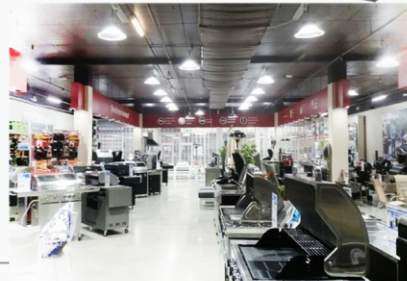
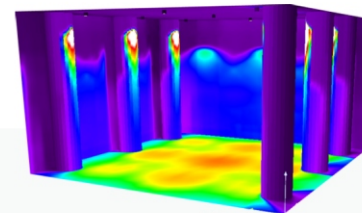
Optional housing
colours



Excellent thermal
management



Ray Trace
Design



Item No.:	Size(mm):	Power:
YNDHBL480	Φ270	80W
YNDHBL4100	Φ270	100W
YNDHBL4120	Φ270	120W
YNDHBL4150	Φ270	150W
YNDHBL4180	Φ270	180W

Beam Angle

Ra

CCT

Light Efficacy

Operating Temp.

LED Chip

LED Driver

IP

Input

End Cap

Zoom

82/95

2700/3000/4000/5000/6000K

120-130lm/W

-10℃-50℃

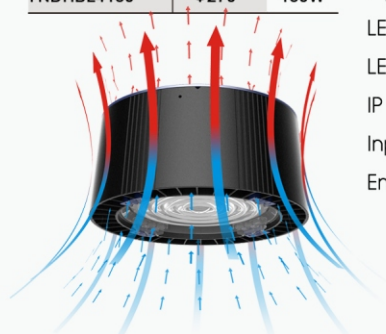
CREE/SAMSUNG/BRIDGELUX/LG

PHILIPS/Lifud/Tridonic

40

AC85-265V 50/60Hz

-



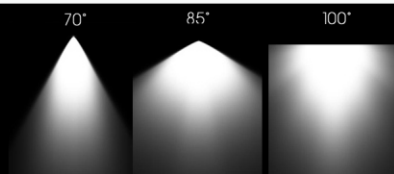
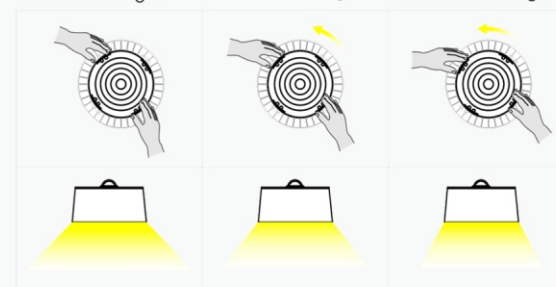
APOLLON

Zoom Lens System

Wide beam angle

Middle beam angle

Narrow beam angle



Top-brand
SMD chip



High colour rendering
index



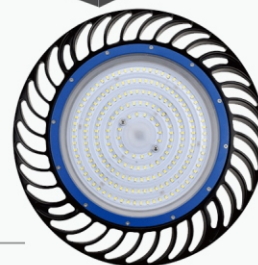
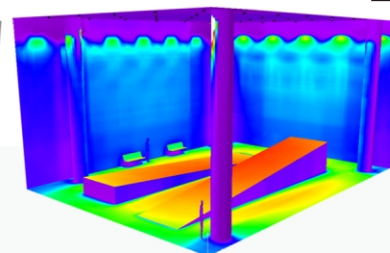
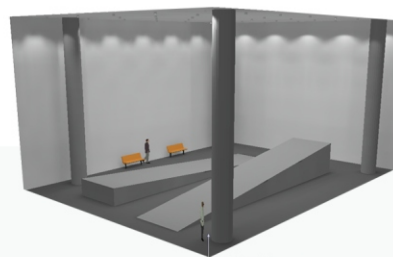
Optional housing
colours



Excellent thermal
management

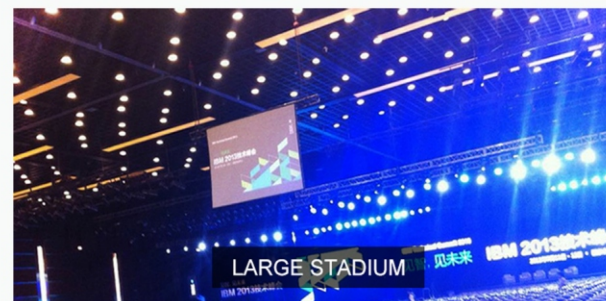


Ray Trace
Design

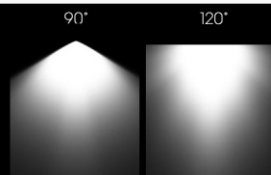


Item No.:	Size(mm):	Power:
YNDHBL5100	Φ280	100W
YNDHBL5150	Φ340	150W
YNDHBL5200	Φ400	200W

Beam Angle	90°/120°
Ra	82/95
CCT	2700/3000/4000/5000/6000K
Light Efficacy	120-130lm/W
Operating Temp.	-10℃-50℃
LED Chip	CREE/SAMSUNG/BRIDGELUX/LG
LED Driver	PHILIPS/Lifud/Tridonic
IP	65
Input	AC85-265V 50/60Hz
End Cap	-



GAEA



Top-brand
SMD chip



High colour rendering
index



Optional housing
colours



Excellent thermal
management



Ray Trace
Design

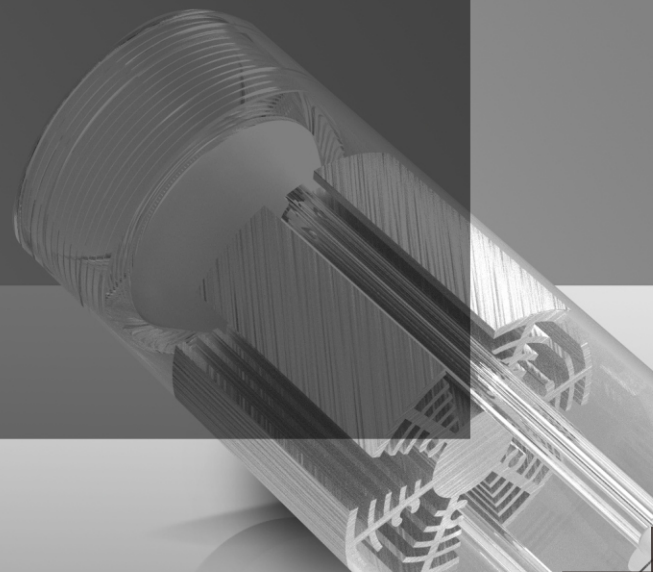
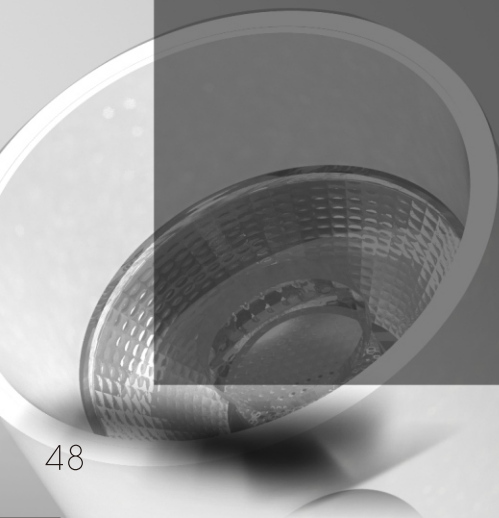
Spot Lights

Series

SPOT

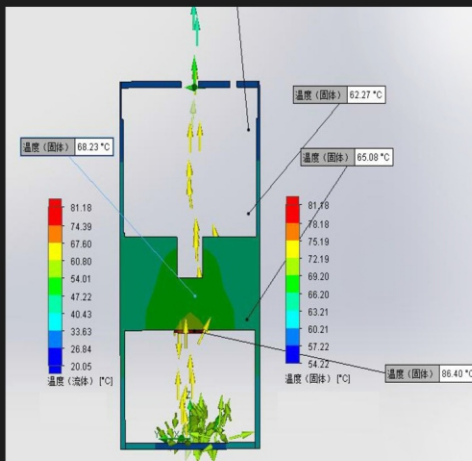
Spot Lights

Pursuing best lighting performances, all LEDs and optical parts are fine selected to meet each fussy requirements. Advanced thermal control technology made the beauty of light long lastingly. Available in Tracking Instalation, Surface mounting installations.



Design Concepts

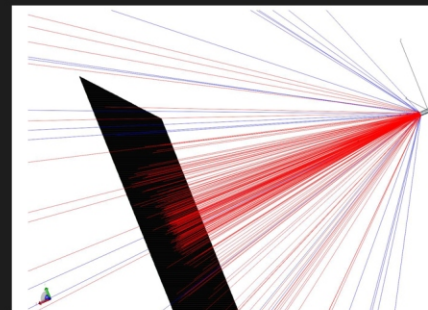
Reliability, Convenience and Performance have been considered during the overall design process. Every heat sinking points, each single ray trace, every convenience of your installation are to be cared.



Air Convection

Lux Analysis

Sound technical support for all your project design needs.



Ray Trace Design

Installation Design

Applicable to Tracking, Surface mounting.

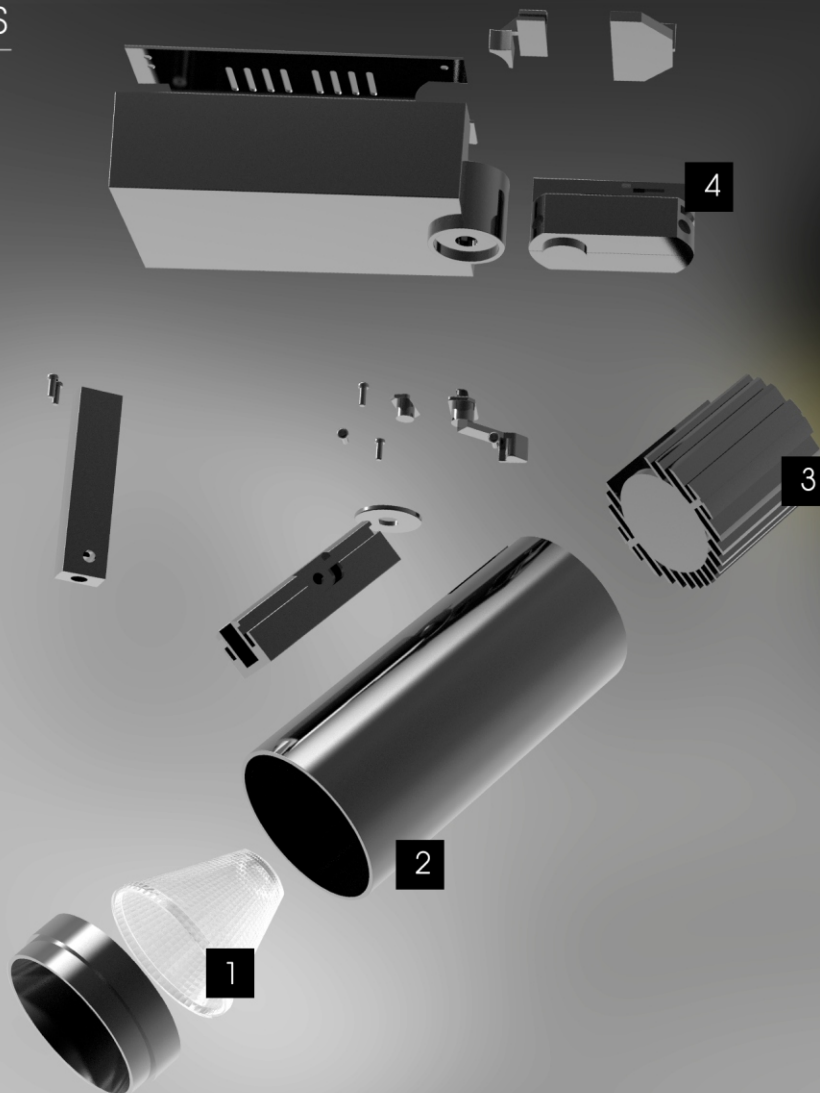


Structure Analysis

WE

Simplism is our philosophy.
The satisfaction of customer experience is our pursuit.

FEATURES



1

Top quality optical parts are adopted for excellent lighting performance.

2

AL6063 Aluminum is adopted for long lasting lifespan.

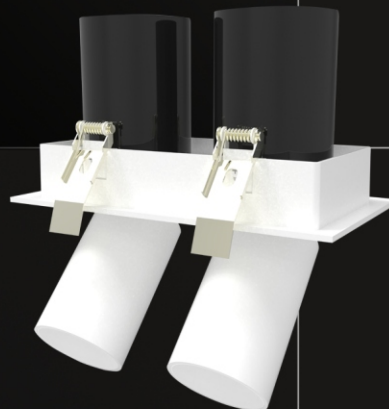
3

Aluminum heat sinker with advanced thermal control technology.

4

2 pins, 3 pins, 4 pins Tracking installation available.

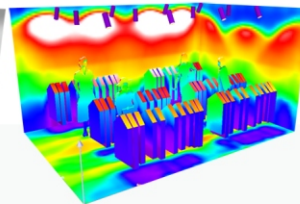
Spot Lights



FEATURES

- Optional body colors.
- Fast installation
- CRI up to Ra95+
- Different lighting angles available.





Item No.:	Size(mm):	Power:
YND-06-ZT-20	Φ57.5*H188	20W
YND-06-ZT-30	Φ73*H224	30W
YND-06-ZT-40	Φ84*H245	40W

Beam Angle	20°/38°/60°
Ra	82/95
CCT	2700/3000/4000/5000/6000K
Light Efficacy	90-110lm/W
Operating Temp.	-10℃-50℃
LED Chip	CREE/LUMINUS/EPISTAR
LED Driver	YND
IP	20
Input	AC220-240V 50/60Hz
Installation Track	2 pins(default), 3 pins, 4 pins

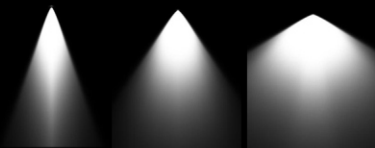


DAPHNE

20°

38°

60°



Top-brand
COB



High colour rendering
index



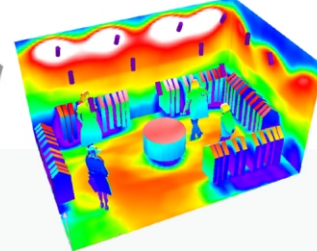
Optional housing
colours



Excellent thermal
management



Ray Trace
Design

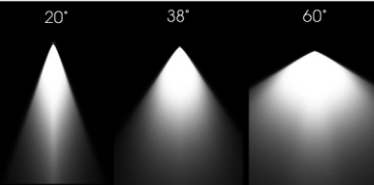


Item No.:	Size(mm):	Power:
YND-06-PT-20	Φ57.5*H225	20W
YND-06-PT-30	Φ73*H225	30W
YND-06-PT-40	Φ84*H255	40W

Beam Angle	20°/38°/60°
Ra	82/95
CCT	2700/3000/4000/5000/6000K
Light Efficacy	90-110lm/W
Operating Temp.	-10℃-50℃
LED Chip	CREE/LUMINUS/EPISTAR
LED Driver	YND
IP	20
Input	AC220-240V 50/60Hz
Installation Track	2 pins(default), 3 pins, 4 pins



EROS



Top-brand
COB



High colour rendering
index



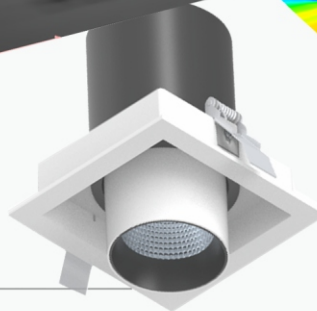
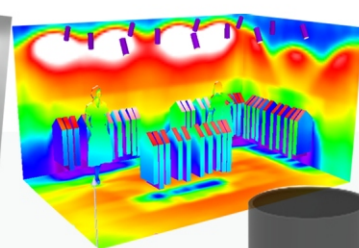
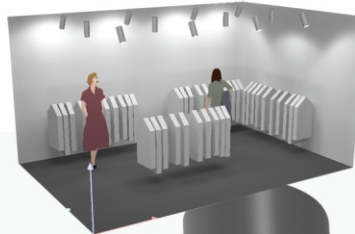
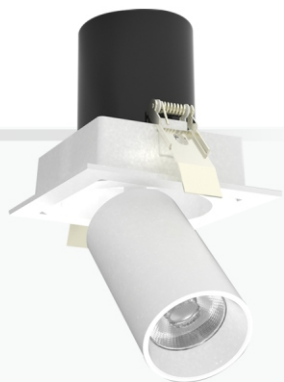
Optional housing
colours



Excellent thermal
management



Ray Trace
Design



Item No.:	Size(mm):	Cutout(mm):	Power:
■ YND-06-LSFD-10	115X115X128	95X95	10W
■ YND-06-LSFD-20	135X135X150	115X115	20W
■ YND-06-LSFS-30	212X115X128	192X95	30W
■ YND-06-LSFS-40	250X135X150	230X115	40W
● YND-06-LSY-10	Φ115X128	Φ95	10W
● YND-06-LSY-20	Φ135X150	Φ115	20W

Beam Angle	20°38°60°
Ra	82/95
CCT	2700/3000/4000/5000/6000K
Light Efficacy	90-110lm/W
Operating Temp.	-10℃-50℃
LED Chip	CREE/LUMINUS/EPSTAR
LED Driver	YND
IP	20
Input	AC220-240V 50/60Hz
Installation Track	2 pins(default), 3 pins, 4 pins



ARGUS

20°

38°

60°



Top-brand
COB



High colour rendering
index



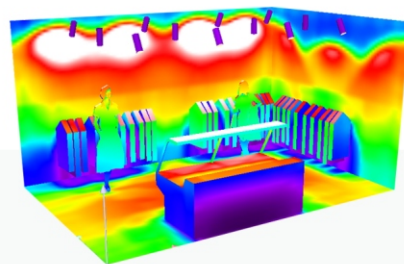
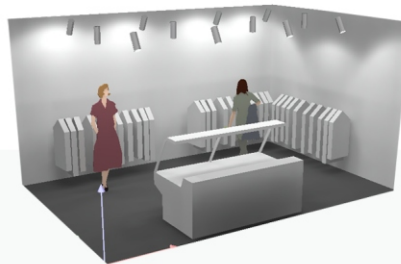
Optional housing
colours



Excellent thermal
management



Ray Trace
Design



Item No.:	Size(mm):	Power:
YND-07X-30	175X200X75	30W
YND-07X-40	220X195X90	40W
YND-07D-30	170X180X75	30W
YND-07D-40	195X210X90	40W

Beam Angle	20°/38°/60°
Ra	82/95
CCT	2700/3000/4000/5000/6000K
Light Efficacy	90-110lm/W
Operating Temp.	-10℃-50℃
LED Chip	CREE/LUMINUS/EPISTAR
LED Driver	YND
IP	20
Input	AC220-240V 50/60Hz
Installation Track	2 pins(default), 3 pins, 4 pins



DEMETER

20°

38°

60°



Top-brand
COB



High colour rendering
index



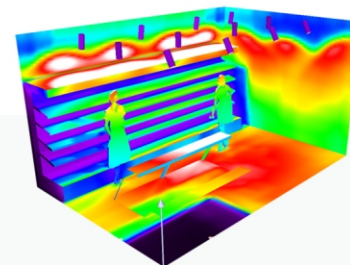
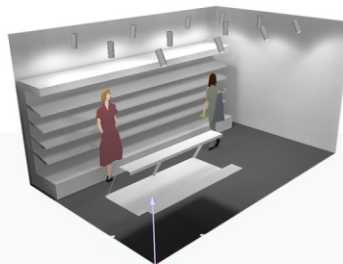
Optional housing
colours



Excellent thermal
management



Ray Trace
Design



Item No.:	Size(mm):	Power:	Beam Angle
YND-08M-20	Φ90X110	20W	10°20°30°
YND-08M-30	Φ100X115	30W	
			Ra
			82/95
			CCT
			2700/3000/4000/5000/6000K
			Light Efficacy
			90-110lm/W
			Operating Temp.
			-10℃-50℃
			LED Chip
			CREE/LUMINUS/EPISTAR
			LED Driver
			YND
			IP
			20
			Input
			AC220-240V 50/60Hz
			Installation Track
			2 pins(default), 3 pins, 4 pins

URANUS

10° 20° 30°



Top-brand
COB



High colour rendering
index



Optional housing
colours



Excellent thermal
management



Ray Trace
Design



ABOUT US

ZHONGSHAN YND OPTOELECTRONIC TECHNOLOGY CO., LTD is a branch company of ZHONGSHAN JIYUXING LIGHTING CO.,LTD which is located in "CHINA LIGHTING CAPITAL"- Guzhen. Our factory is specialized in applying, researching and developing of led linear lights and led UFO high bay lights.

As one of the most professional lighting factories, we have the best engineers and product developing team. There are more than 10 people in this team, working in LED driver, SMD, product designs and mould. What we are doing is more than assembling, we make the designs, open the mould, produce the housing and doing the assembling all by ourselves. There are mould workshop, SMD workshop, CNC workshop, stamping workshop, reflector workshop, LGP and diffuser workshop and assembling workshop which cooperate with each other to finish the whole productions. We have professional machines workshops, such as high speed SMD machine, Integrating sphere, Laser cutting machine, CNC machines, and aging lines. The most professional machines plus the best researching and developing team, assure that we could work highly efficiency from the developing, testing until final assembling.

The factory occupies more than 10,000m², design are always leading the market, we have more than 20 patents of the product function and appearance. Unique design, favorable and stable quality, competitive prices make our products hot sold in both home market and overseas markets.





YNDLUX Company

Yihui Road, Maohui Industrial Zone, Henglan Town, Zhongshan City,
Guangdong Province, 528478, P.R.China.

Tel. 0086 760 8768 6083

Whatsap: 0086 135 9073 9663

Email: 597984761@qq.com

Wechat: T665C5

www.yndlux.com